

OUR SERVICES

MYTECH
AUTOMATION

ABOUT US

Our company has started its first activities under the name of Mytech Automation in 2014, which is one of the leading cities of our country, which is a key and key point in terms of world's energy resources, cultural resources and young population resources. Thanks to its growing customer demands, evolving know-how and the accumulation of solutions for the sector, Mytech Automation has gradually become a step-by-step into a competitive brand in the regional, national and global automation market.

Mytech Automation team has successfully completed many large factory and field automation projects, especially in the fields of turn-key cable factory automation, rolling automation and textile automation, thanks to its high stock power, 1600m² enclosed panel manufacturing-commissioning area.



SCAN ME!

www.mytechautomation.com

OUR SERVICES

01

EXPERTIZ REVISION

1.1: STANDART EXPERTISE

A: Visit
B: Control
C: Report
D: Energizing

1.2: ADVANCED EXPERTISE

A: Visit
B: Control
C: Report
D: Energizing
E: Revision / Renewal
F: Commissioning

PRODUCT SUPPLY AND BEFORE SALE ENGINEERING SERVICE

Procurement of the desired product as soon as possible and researching and presenting the equivalent according to the technical specifications to the customer.

02

03

2.HAND MACHINE REVISION, SALES AND MARKETING

All cable machine industry automation and mechanical revisions with world standards using up-to-date technology efficient, fast and modern structure.

SALES POST ENGINEERING SERVICE

After sales, installation technique during physical or remote intervention and direction.

04

05

TECHNICAL AND INVESTMENT CONSULTANCY SERVICE

EXPERTISE AND REVISION PROCESS

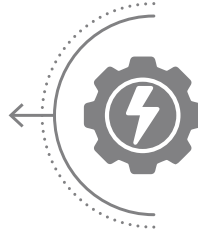
1: Firstly Our technical team machine to be built receives information about. (Mail and Phone)



2: Appropriate visit schedule is determined between Mytech and the customer. And Mytech team goes to visit customer.



3: The whole system is examined by the technical team, if possible, it is analyzed under energy.



4: Materials that are sound are used and other necessary materials are removed and reported.



5: After customer approval, mutual agreement is signed and necessary materials are ordered.



6: After the supply of materials, the technical team visits the customer again and makes all necessary hardware and software changes.



7: Test production is done and training is given by the technical team.



8: All the changes made are prepared and delivered as a project in written form.





REVISION / RENEWAL



EXTRUSION PROCESS



**Insulation
Line**

**Sheathing
Line**

**Filling and
Sheathing Line**

**Solar Cable
Extruder Line**

**Auxiliary
Equipment**

- Pay-Off / Take-Up
- Accumulator
- Pattern / Die / Tip / Parts
- Katerpillar
- Cooling Pool / Channel
- Meter Counter

SOME EXAMPLES OF REVISION WE HAVE COMPLETED

Flyer Pay-Off tension card is revised and time stable in tension study provided.



Mechanically flawless the Capstan old driver new by replacing speed boost with software making a mistake is synchronized.



The entire SZ twisting line servo motor and drivers has been changed.

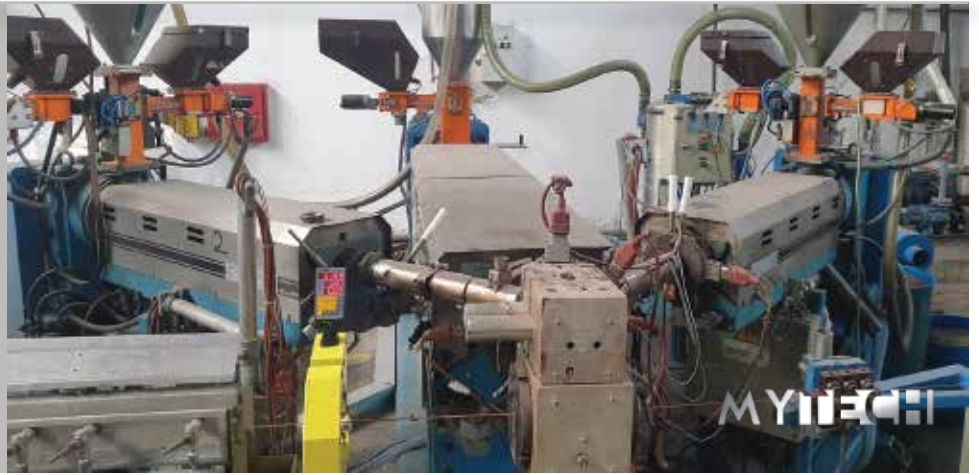
Position locking software to a higher performance has been raised.



This production above line 5 PAY-OFF + S/Z Twist, From Filler/Sheath Extruder consists of.

After revision 300m / min original production capacity has achieved.

In fast single lines, we ensure color transition with the least loss by providing synchronization with many different colors.



We apply flexible software in changeable sizes suitable for the machines available in your factory.

Double take up, which is very good in mechanical condition, the automation system has been renewed and the error has been synchronized.



While the need for cables in today's world is increasing day by day, the latest technology.

Flexible, fast and reliable solutions in extrusion processes using innovations
We bring it together and deliver it to our customers.

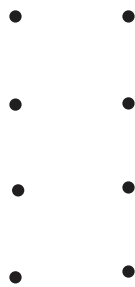
STRANDING PROCESS

Taping / Armoring Line

Rigid Twist Line

Single Twist Line

Double Twist Line



Tubular Twist Line

Bow Twist Line

Drum Twist Line

Planet Twist Line



MYTECH



After the revision, our technical team monitors the system in all test production stages, makes up for the deficiencies and gives the necessary suggestions to increase work safety and productivity. Offers to our valued customers.





TWISTING PROCESS



Thanks to the gearbox-driven engines with high torque at low speed, high precision and near-perfect synchronous operation.

WIRE DRAWING PROCESS

Step 01

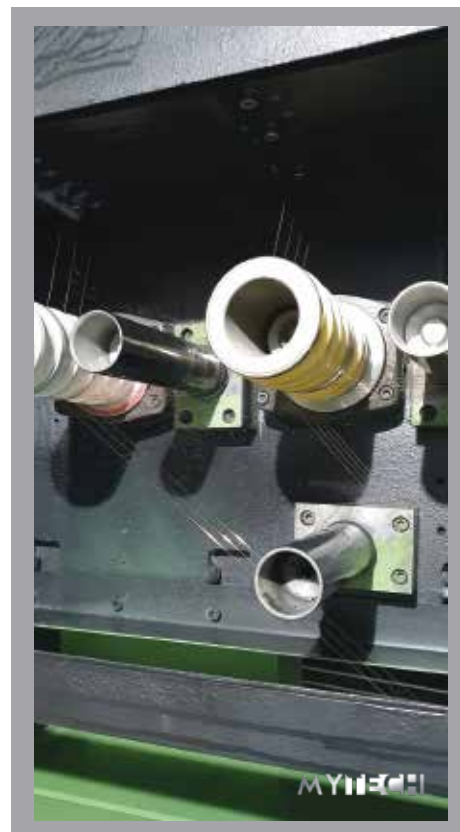
Rod Breakdown
Drawing Machine

Step 02

Medium Cooper
Drawing Machine

Step 03

Multi Wire
Drawing Machine





Our customer delivered us the 2nd hand medium cooper drawing machine (without automation panel).

All mechanical equipment of the machine Revised and by Mytech a new automation panel was fabricated. Rebuild the entire automation system was designed. Delivered as zero. Has been activated.





Requests of our customers in our revisions in line with the minimum cost using the latest available technology, we are implementing.

OTHER INDUSTRY SOLUTIONS

TEXTILE INDUSTRY



It is quite common in fabric dye finishing processes.
with our experience and innovative automation
solutions we are with you.



ALUMINUM PRESS LINE



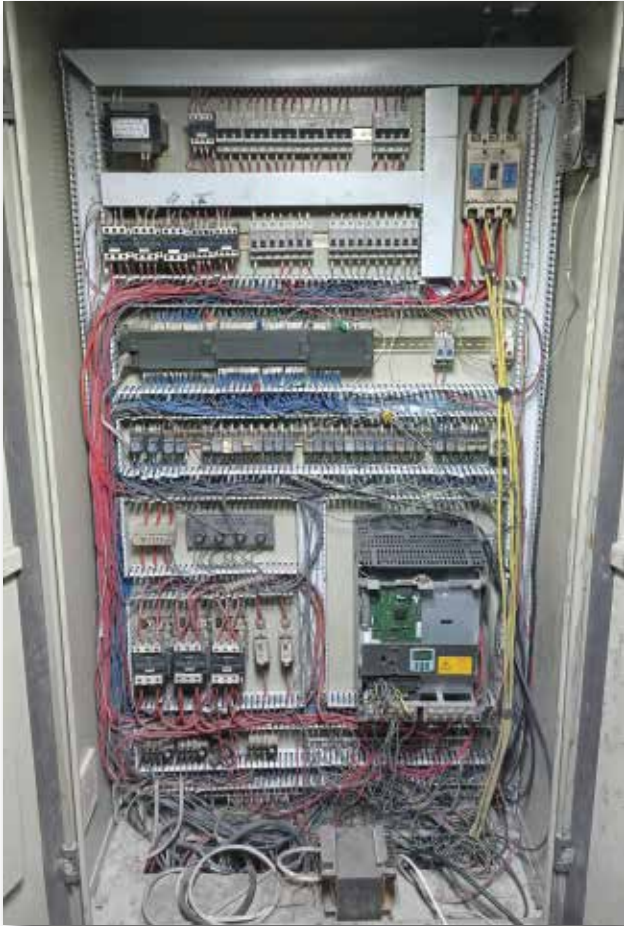
By following the latest innovations in technology, the accumulated knowledge of our customers' requests blending in line with the machine and software bringing together the most advanced level of work safety, efficiency and we offer high quality to our customers.

OVERHAULED AUTOMATION PANEL

Before

/

After

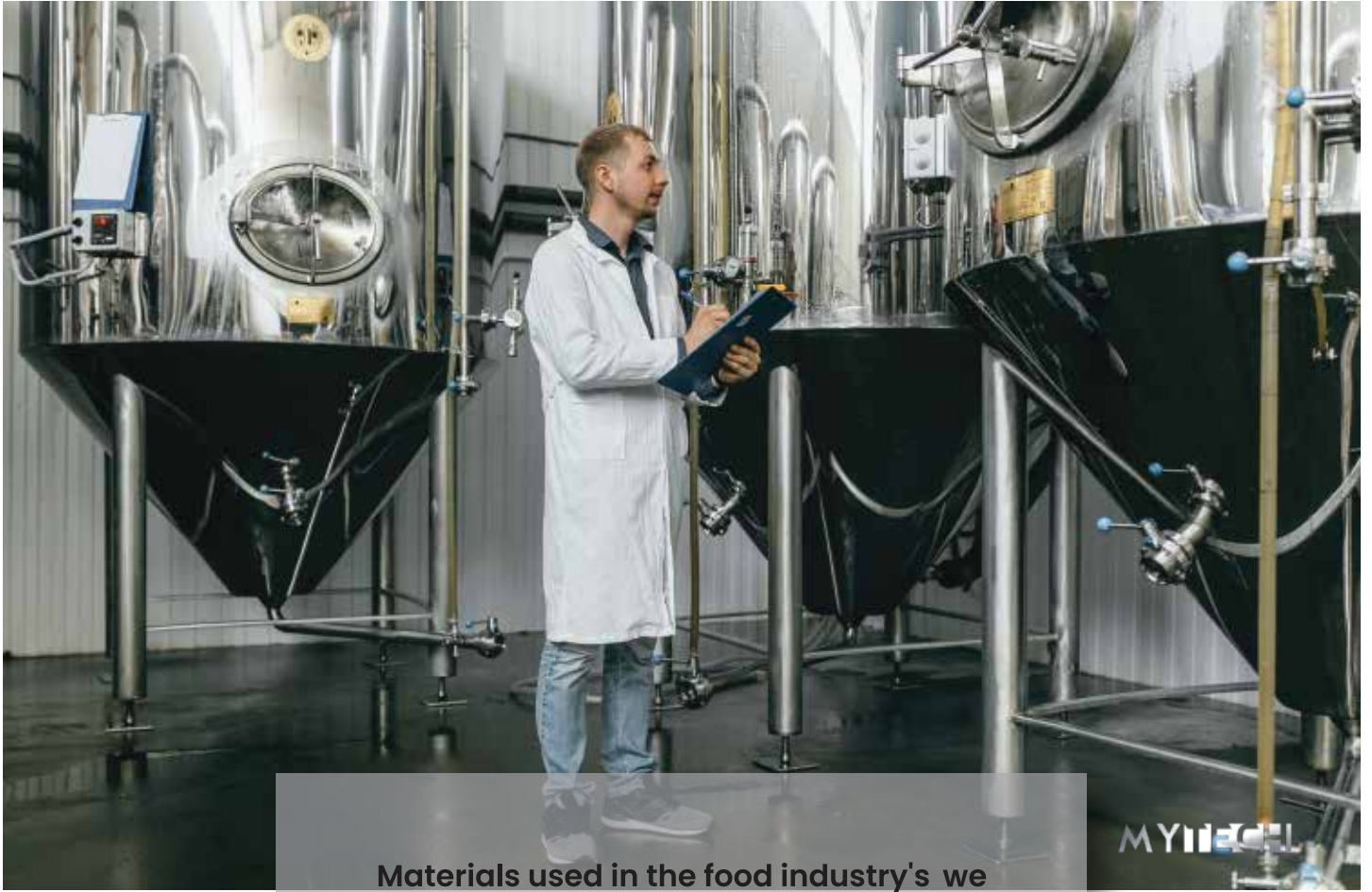


From the aluminum profile production factory the previous and next state.

ALUMINUM SEPARATOR

With the software we have standardized,
we achieve successful results in
applications that require winding,
unloading and sensitive tension, and offer
different solutions to our customers.

FOOD INDUSTRY



Materials used in the food industry's we determine suitability. We maximize human health and occupational safety. We integrate the most suitable automation system.



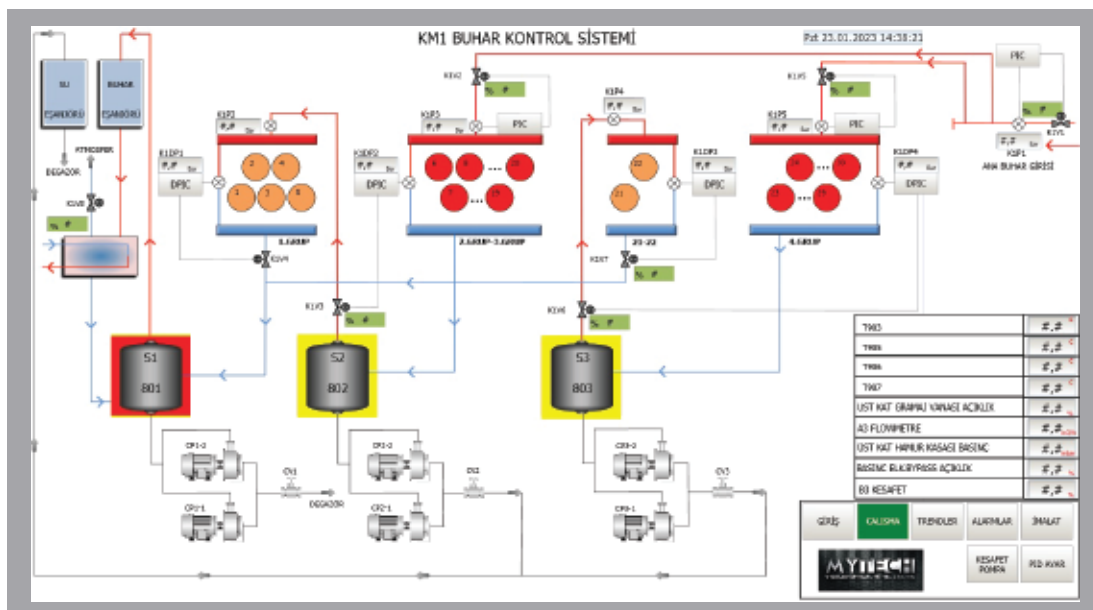
SCADA

The first letters of the words Supervisory Control and Data Acquisition SCADA created with; "Central Supervision Control and Data Collection" called system.

All machines in the field can be monitored from a single center and given recording, reporting, retrospective in graphs. We build structures that enable it to be processed and analyzed. In this way our customers retrospectively to all data about the machine and production they have access to.



Example : Steam control system of the whole factory, a single pc monitoring and reporting of graphics by all valves pid control and parameter setting of all other equipment includes doing.



IRON AND STEEL INDUSTRY



Continuous System, which we made in the iron and steel industry, Annealing Furnace, Flying Shear, Termex, Rolling Loop with our apps with our latest innovative solutions brought by technology we are with you.



BRANDS USED

SIEMENS

Schneider
Electric

ABB

PHOENIX
CONTACT

OMRON

Parker

CONTROL 
TECHNIQUES

 **DELTA**
Smarter. Greener. Together.

MYTECH

AUTOMATION



MYTECH AUTOMATION

Address: Zafer Mahallesi 1068 Sokak No:6 Denizli / Turkey

e mail: info@mytechautomation.com

Phone: +90 258 371 2074

